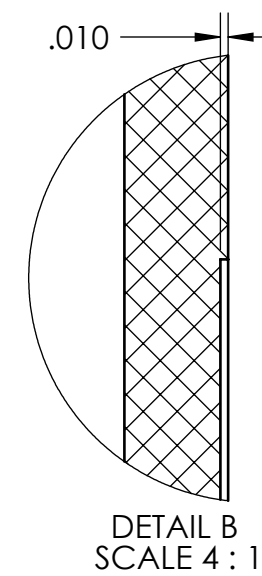
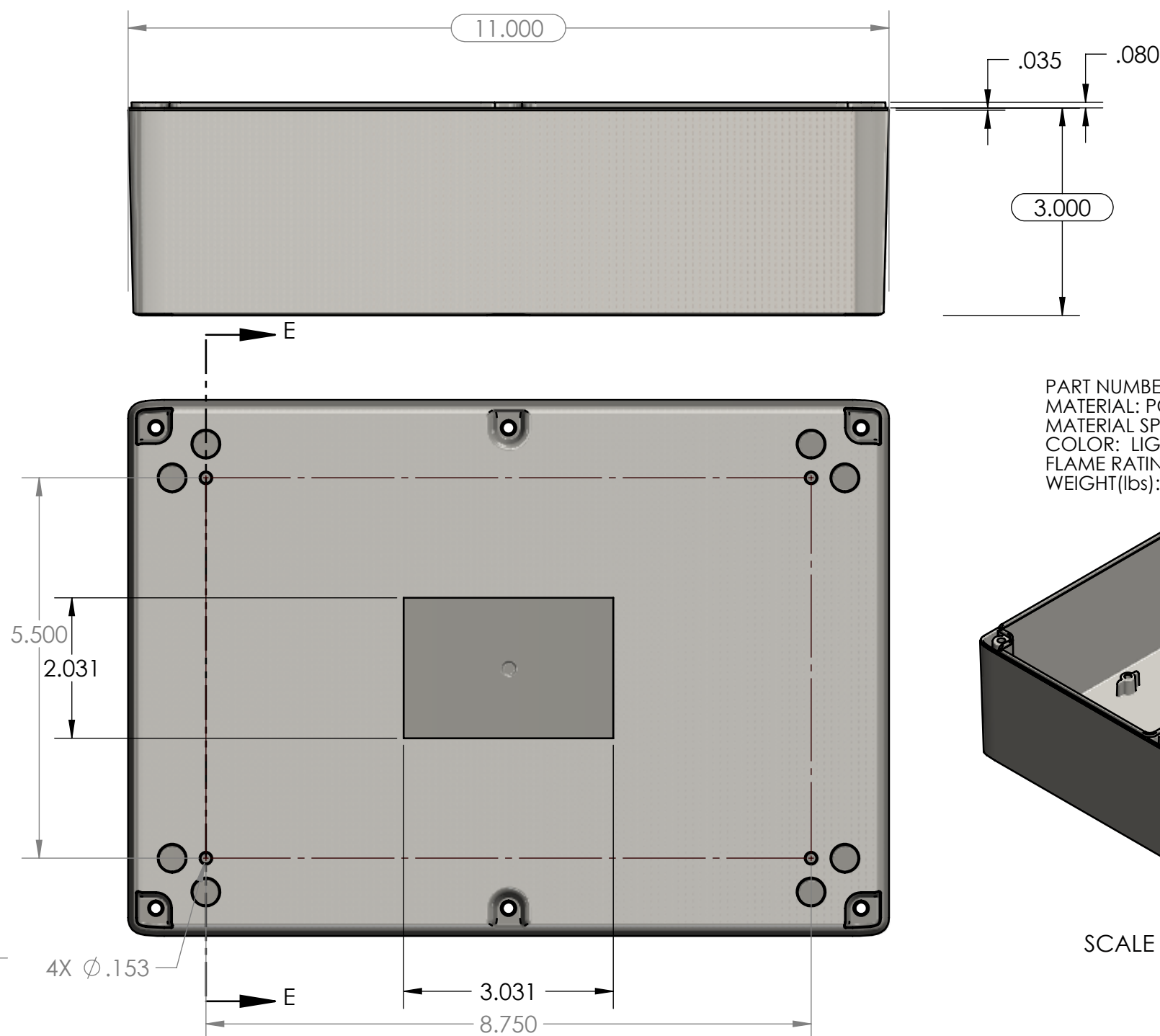
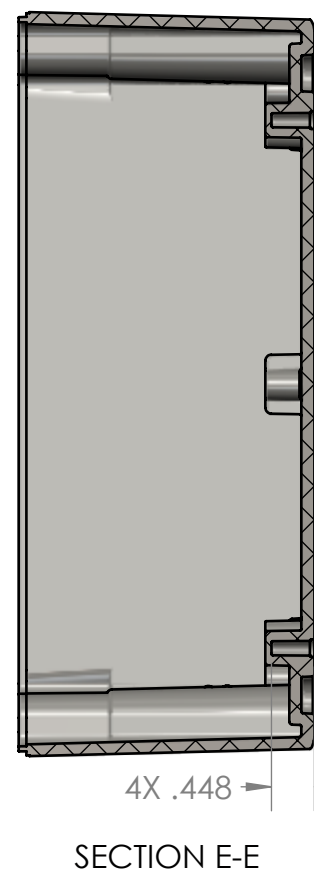
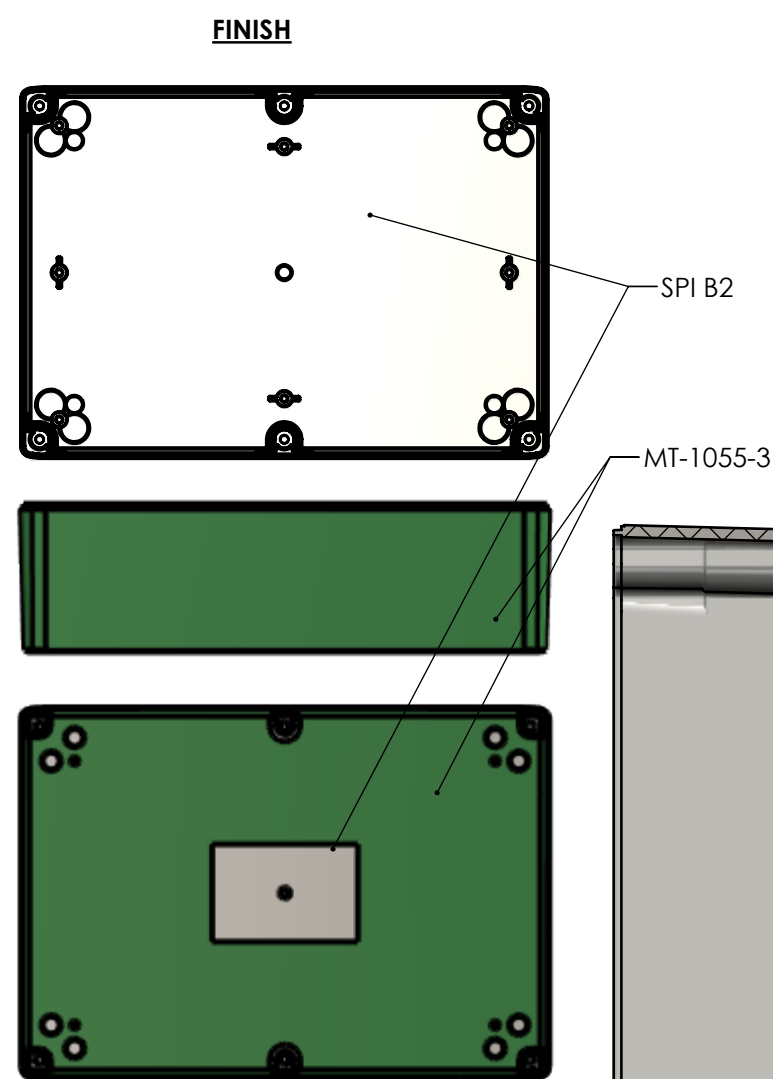
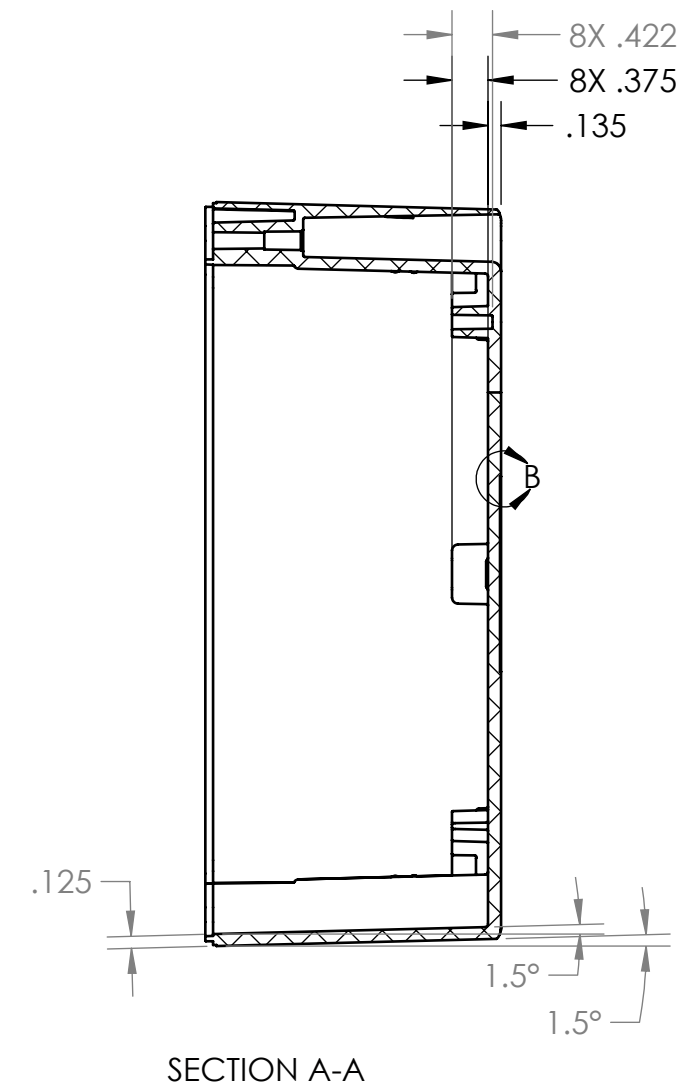
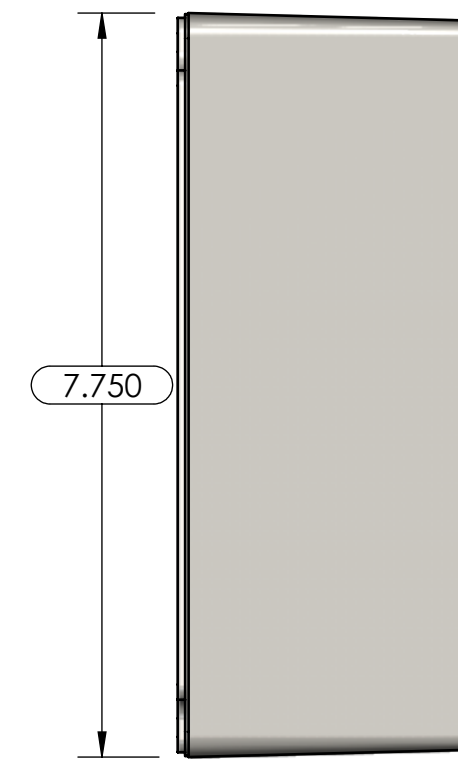
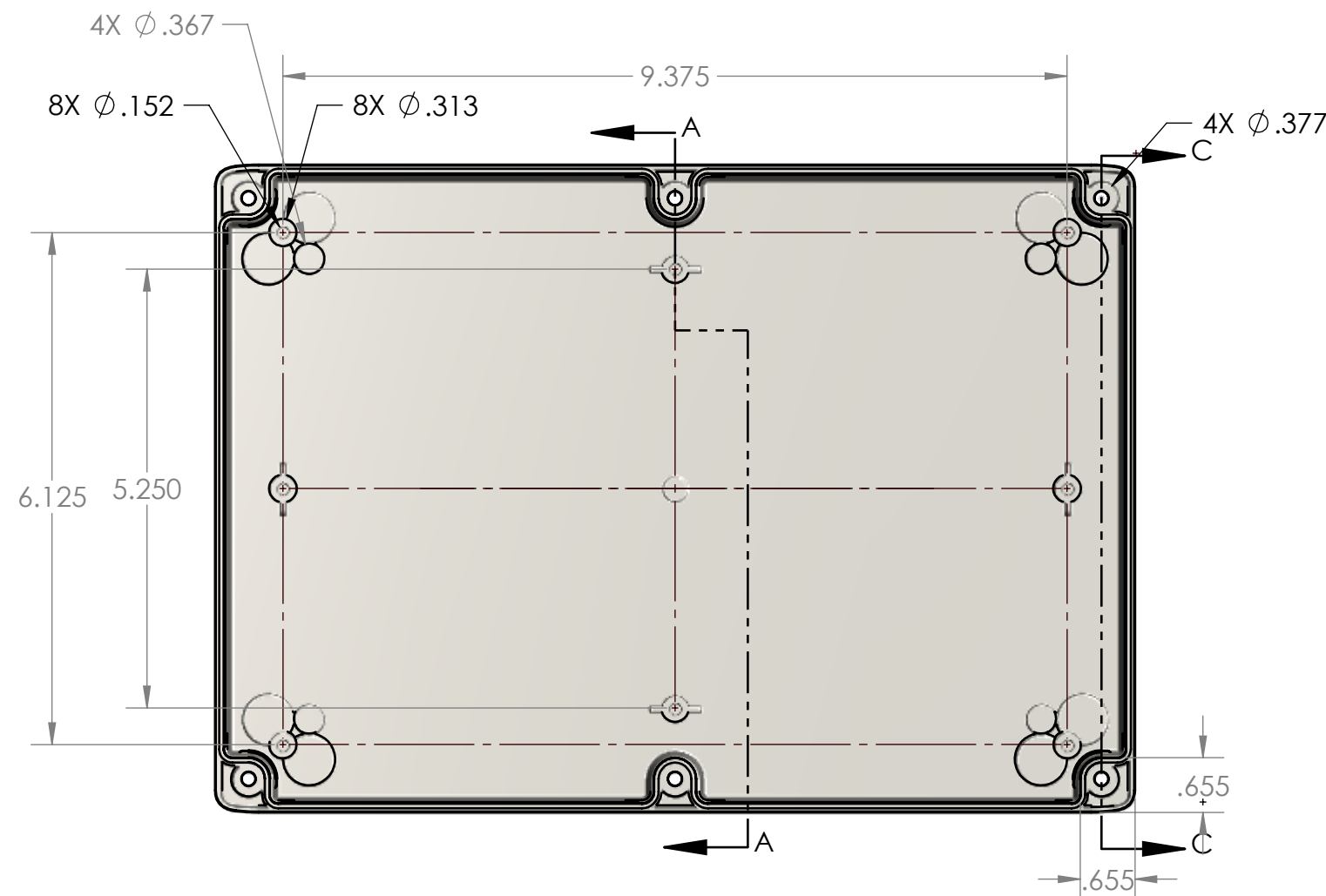
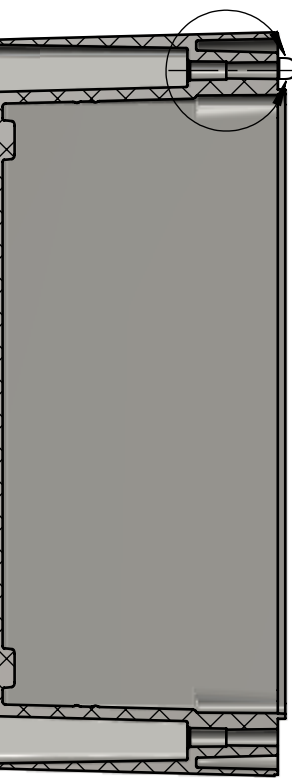
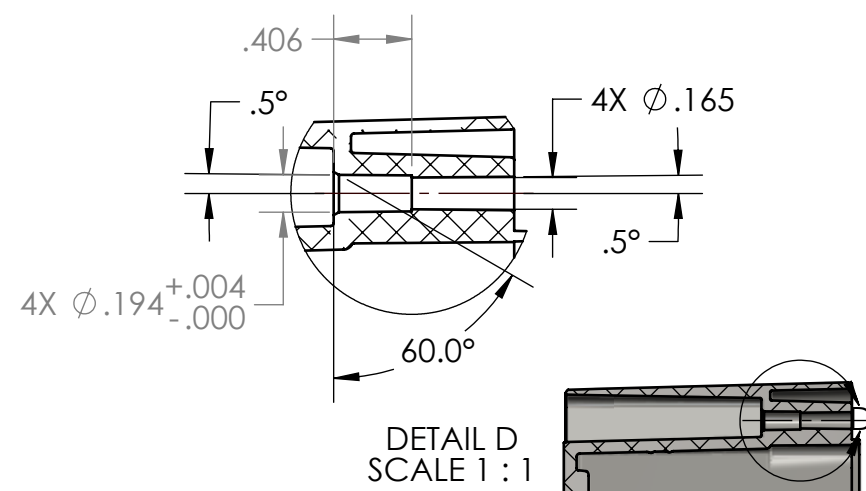
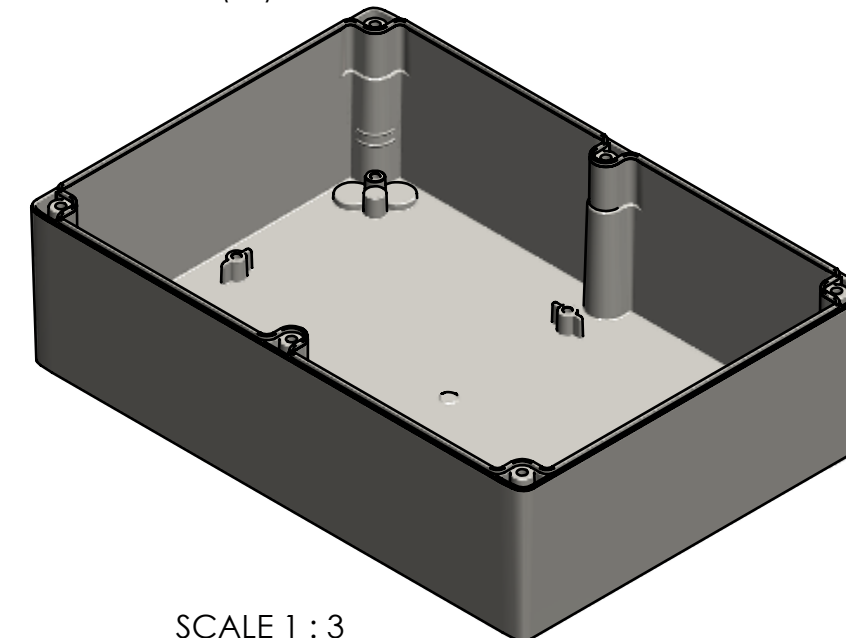


| TOLERANCE CHART | | | | | | | | | | | | | | | | |
|--------------------|-------|-------|-------|-------|-------|-------|-------|-------|-------|-------|-------|-------|-------|-------|-------|--------|
| DIMENSION RANGE | 0 | .039 | .118 | .236 | .394 | .591 | .866 | 1.181 | 1.575 | 2.087 | 2.756 | 3.543 | 4.724 | 6.299 | 7.874 | 9.843 |
| | .039 | .118 | .236 | .394 | .591 | .866 | 1.181 | 1.575 | 2.087 | 2.756 | 3.543 | 4.724 | 6.299 | 7.874 | 9.843 | 12.402 |
| TOOL DEPENDENT | ±.007 | ±.007 | ±.008 | ±.008 | ±.009 | ±.010 | ±.011 | ±.012 | ±.013 | ±.015 | ±.017 | ±.020 | ±.024 | ±.028 | ±.035 | .043 |
| NON-TOOL DEPENDENT | ±.003 | ±.004 | ±.004 | ±.004 | ±.005 | ±.006 | ±.007 | ±.008 | ±.009 | ±.011 | ±.013 | ±.016 | ±.020 | ±.024 | ±.031 | .039 |

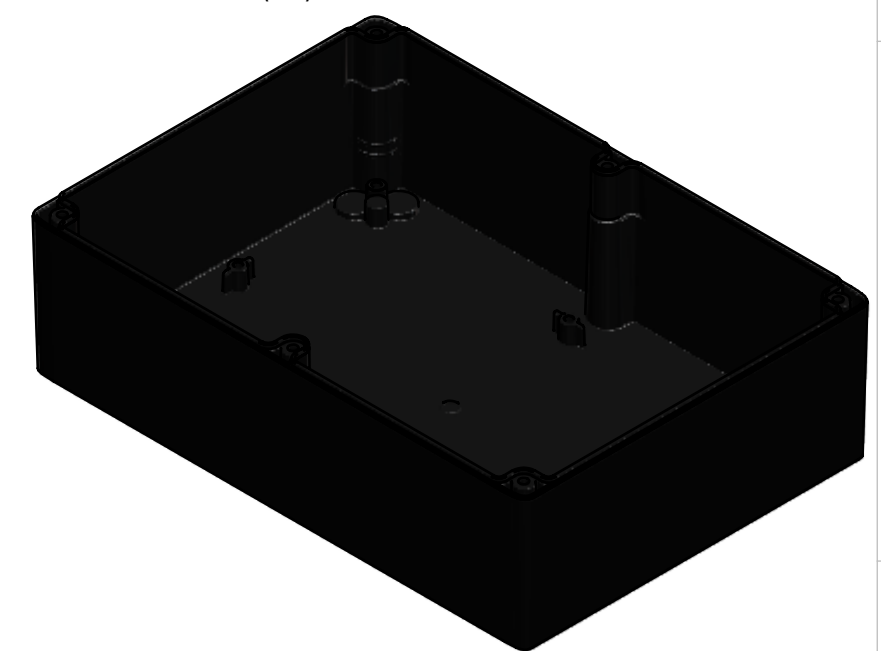


PART NUMBER: HN-88BPN-01
MATERIAL: PC
MATERIAL SPEC: /PC/XXX/GY
COLOR: LIGHT GRAY
FLAME RATING: UL94-5VA
WEIGHT(lbs): 1.1389



SCALE 1 : 3


PART NUMBER: HN-88BPN-00
MATERIAL: PC
MATERIAL SPEC: /PC/XXX/BK
COLOR: BLACK
FLAME RATING: UL94-5VA
WEIGHT(lbs): 1.1389



SCALE 1 : 3

NOTES:

1. REFER TO SOLID MODEL FOR COMPLETE PART DEFINITION.
2. (INSPECTION DIMENSION)
3. EJECTOR PINS TO BE FLUSH $\pm .015$
4. FLASH .005 MAX
5. MAX REGRIND: 20%
6. GATE MUST BE FLUSH OR BELOW ADJACENT SURFACE

| | | | | | | | | | | | | | | | |
|-----------|---|------|----------------|---------------|---|--------------------------|----------------|--|--|--|--|------------|--|--------------|--|
| 2 | ADDED UNDERCUTS AND UPDATED SMALL DETAILS | | Douglas French | 11/18/2025 | UNLESS OTHERWISE SPECIFIED: DIMENSIONS ARE IN: INCHES[mm] TOLERANCES: ANGULAR: $\pm 2^\circ$ TWO PLACE DECIMAL: \pm THREE PLACE DECIMAL: \pm PRINTED GRAPHICS: \pm PROPRIETARY AND CONFIDENTIAL THE INFORMATION CONTAINED IN THIS DRAWING IS THE SOLE PROPERTY OF POLYCASE. ANY REPRODUCTION IN PART OR AS A WHOLE WITHOUT THE WRITTEN PERMISSION OF POLYCASE IS PROHIBITED. CAD FILE: HN-58891 | PART NO. AS NOTED | | <div></div> <div>1305 CHESTER IND. PARKWAY AVE. OHIO 44011-1083 U.S.A. PHF: 1-800-248-1233, 440-734-0444 FAX/FX: 440-734-0088</div> | | | | BASE | | REV | |
| 1 | UPDATED METAL FEET LEAD-IN | | Douglas French | 4/3/2025 | | MATERIAL PC | | | | | | SCALE: 1:2 | | SHEET 1 OF 1 | |
| 0 | | | Douglas French | 2/27/2025 | | FLAME RATING UL94-5VA | | SIZE C | | | | | | | |
| REV. | COMMENT | ZONE | REVISED BY | CREATION DATE | | DRAWN CHECKED | NAME D.M.F. | DATE 11/18/2025 | | | | | | | |
| REVISIONS | | | | | | | | | | | | | | | |